



26 Redfield Road

, BA3 2JW

£299,950

A home which can grow with you. A mature home with large garden and primed for growth through extensions (STPP).

- No onward sales chain!
- Potential to extend (STPP)
- High ceilings
- Character features
- Large garden
- Driveway parking

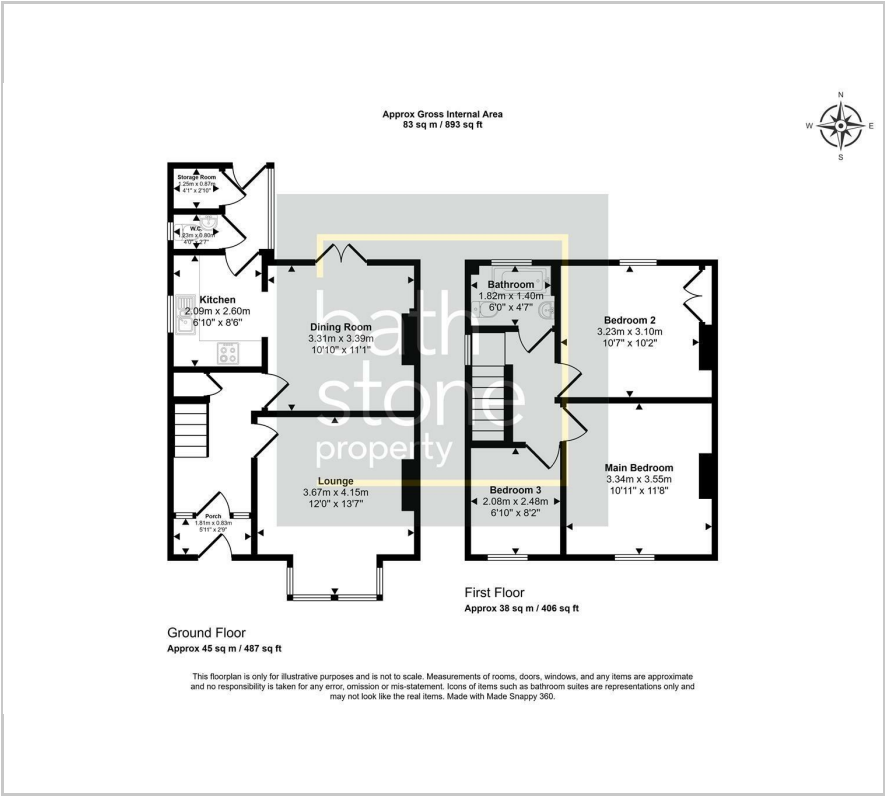
Viewing

Please contact our Bath Stone Property (MSN) Office on 01761 360144

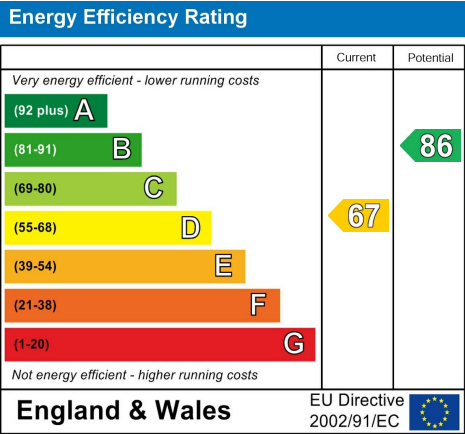
if you wish to arrange a viewing appointment for this property or require further information.



Floor Plan



Energy Efficiency Graph



Please give us Feedback



These particulars, whilst believed to be accurate are set out as a general outline only for guidance and do not constitute any part of an offer or contract. Intending purchasers should not rely on them as statements of representation of fact, but must satisfy themselves by inspection or otherwise as to their accuracy. No person in this firms employment has the authority to make or give any representation or warranty in respect of the property.